



DRC

PZ25-12000025

08/06/2025

22-05

3-49-42



DRC

PZ25-12000025

08/06/2025



DRC

PZ25-1200025

08/06/2025

1-21-69

49-14-12



DRC

PZ25-12000025

08/06/2025

1 - 29 - 71

BROWARD COUNTY, FLORIDA

SCALE 1" = 300'

3 - 49 - 42



DRC

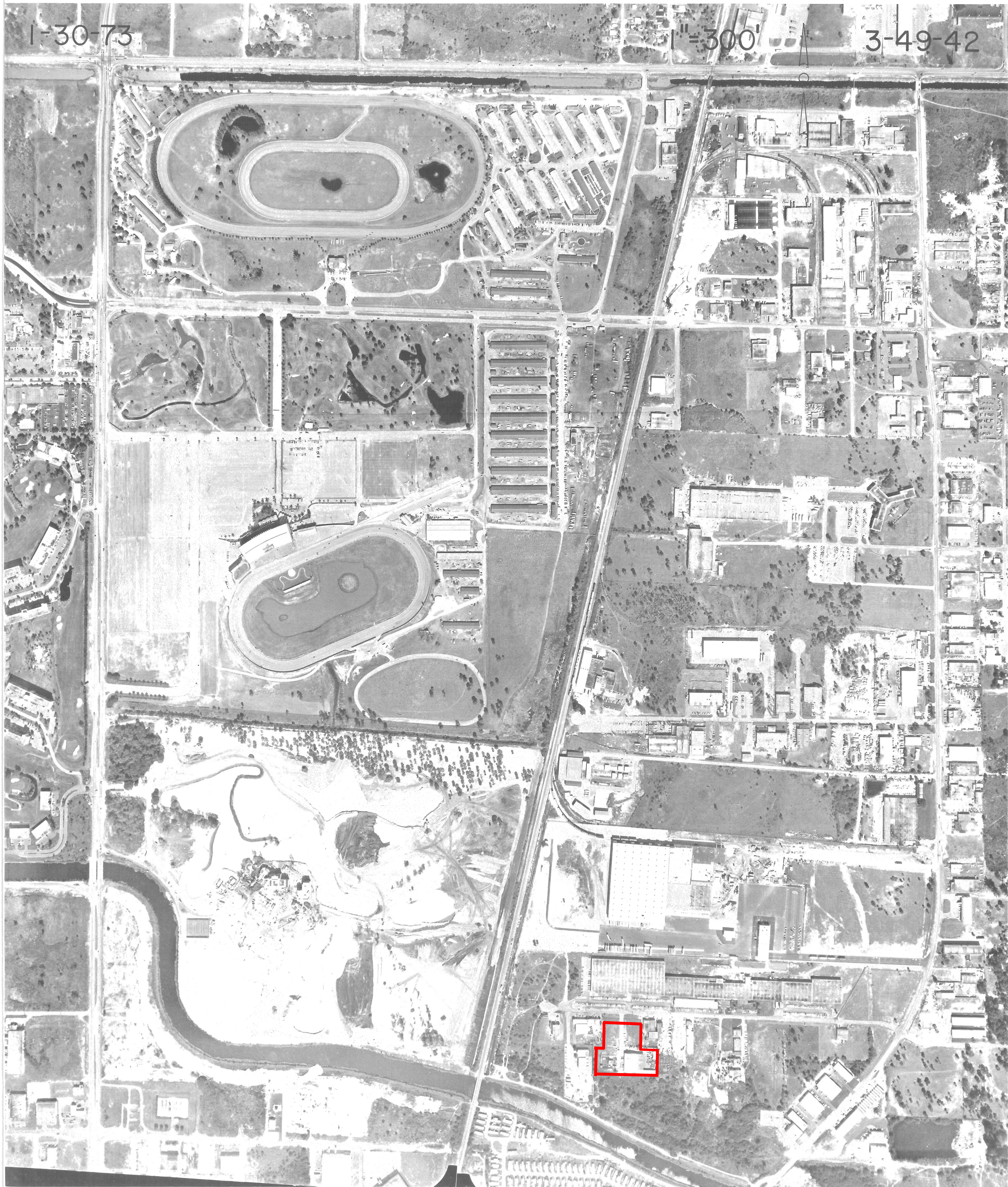
PZ25-12000025

08/06/2025

1-30-73

1"=300'

3-49-42



DRC

PZ25-12000025

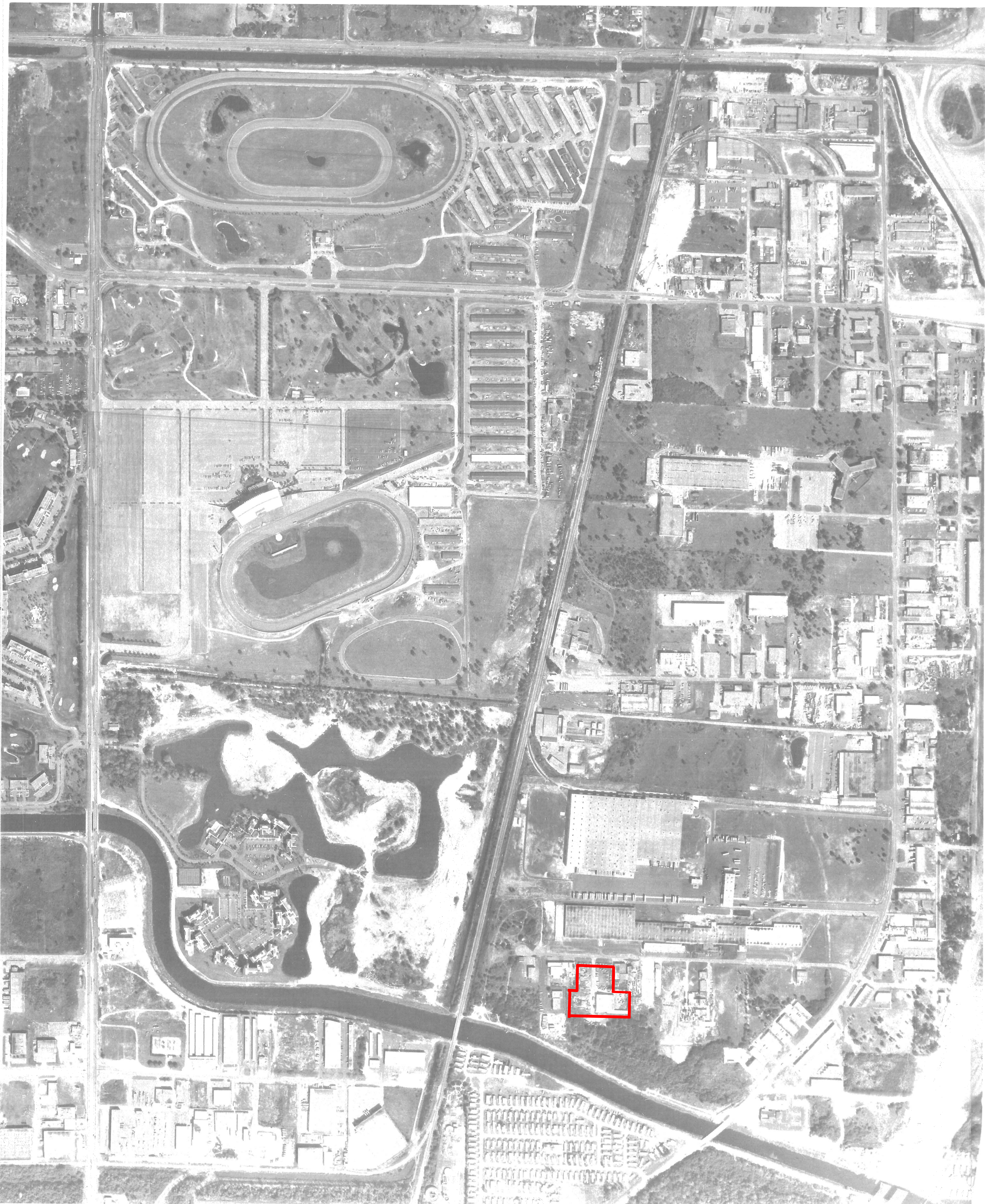
08/06/2025



DRC

PZ25-1200025

08/06/2025



1 1975

RADER AND ASSOCIATES, INC.
MIAMI, FLORIDA

BROWARD COUNTY FLA.

DRC

NORTH

SEC	TWP	RNG
3	49S	42E

PZ25-12000025

08/06/2025

DATE FLOWN
1.23.76

3.49.42



1"=300'



Bosworth Aerial Surveys, Inc.

This Is A Print Of The Original
Cronaflex On File With The
OFFICE OF ENGINEERING
DEPARTMENT OF TRANSPORTATION
BROWARD COUNTY, FLORIDA

DRC

PZ25-12000025

08/06/2025



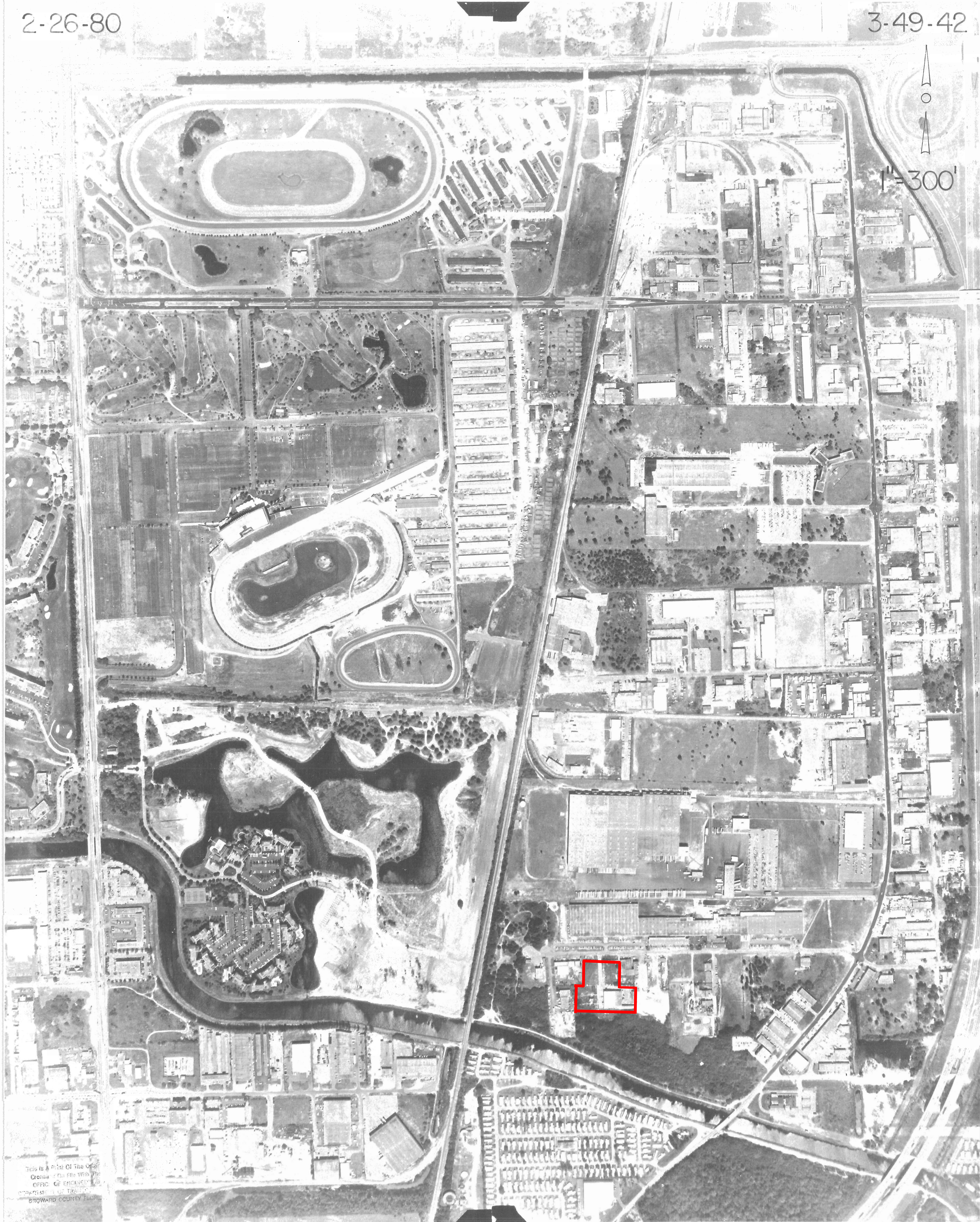
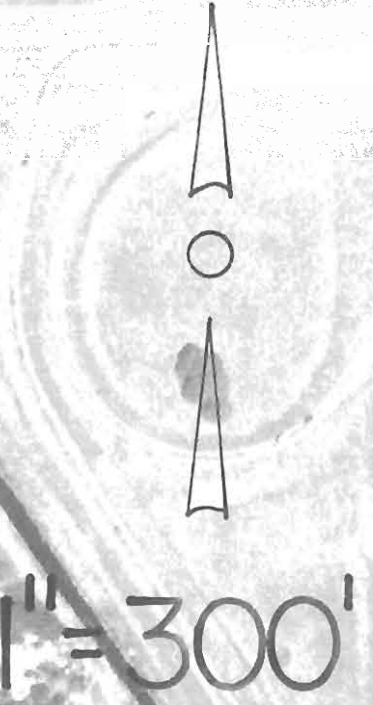
DRC

PZ25-12000025

08/06/2025

2-26-80

3-49-42



This is a Plot Of The Official
Census - On File With The
OFFICE OF ENGINEERING
BROWARD COUNTY FLORIDA

DRC

PZ25-12000025

08/06/2025

INTERPOLATION OF COORDINATES TO THE NEAREST 0.1 FT. THE USER IS TO BE RESPONSIBLE FOR
THE DATA AND/OR THE QUALITY OF THE DATA. THE USER IS TO BE RESPONSIBLE FOR THE DATA.

POINT	STATE PLANE COORDINATES		POINT	STATE PLANE COORDINATES	
	X	Y		X	Y
A	776514.25	687059.44	E	779705.87	685817.06
B	776638.62	683051.94	F	781487.44	684689.38
C	782179.56	683156.06	G	782269.00	687317.31
D	777823.00	686275.50	H	780116.50	687912.06



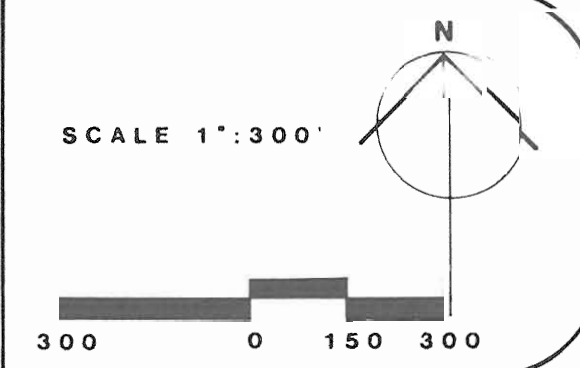
BROWARD COUNTY, FL.

3 49 42 SOUTH
SECTION TOWNSHIP RANGE

FLIGHT DATE: MARCH, 1984
BY BOSWORTH AERIAL SURVEYS INC. - LAKE WORTH, FL.

33-48-42	34-48-42	35-48-42
4-49-42	THIS SHEET	2-49-42
9-49-42	10-49-42	11-49-42

This is a copy of the original mylar on file with the Engineering Division, Public Works Department, Broward County, Florida.
Permission to copy this photograph is granted provided that the copies are not made or reduplicated for distribution for direct commercial advantage and that the entire title block appear on all copies. To copy or redistribute otherwise requires a fee and/or the specific permission of the Broward County Office of Planning.
Broward County makes no claim or guarantee regarding the accuracy of any copies.



DRC

PZ25-12000025

08/06/2025

REPRODUCTION OF THIS AERIAL PHOTOGRAPH IS PROHIBITED WITHOUT THE WRITTEN PERMISSION OF THE BROWARD COUNTY ENGINEERING DIVISION, PUBLIC WORKS DEPARTMENT.



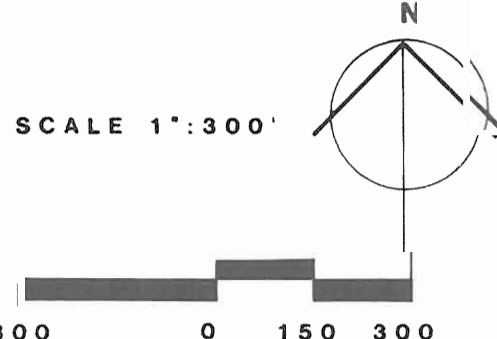
BROWARD COUNTY, FL.

3 49 42 south

SECTION TOWNSHIP RANGE FLIGHT DATE: APRIL, 1977 BY BOSWORTH AERIAL SURVEYS INC. - LAKE WORTH, FL.

THIS
SHEET

This is a copy of the original mylar on file with the Engineering Division, Public Works Department, Broward County, Florida. Permission to copy this photograph is granted provided that the copies are not made or reduplicated for distribution for direct commercial advantage and that the entire title block appear on all copies. To copy or redistribute otherwise requires a fee and/or the specific permission of the Broward County. Broward County makes no claim or guarantee regarding the accuracy of any copies.



DRC

PZ25-12000025

08/06/2025



BROWARD COUNTY, FL.

3 49 42S 2-5-90
SECTION TOWNSHIP RANGE DATE OF FLIGHT

PAN AMERICAN SURVEYS INC. MIAMI, FL.

THIS IS A COPY OF THE ORIGINAL AERIAL PHOTOGRAPH AND THE ENGINEERING DIVISION, PUBLIC WORKS DEPARTMENT, BROWARD COUNTY, FLORIDA.
PERMISSION TO COPY THIS PHOTOGRAPH IS GRANTED, PROVIDING THAT THE COPIES ARE NOT MADE OR REDUPLICATED FOR DISTRIBUTION FOR DIRECT COMMERCIAL ADVANTAGE, AND THAT THE ENTIRE TITLE BLOCK APPEARS ON ALL COPIES. TO COPY OR OTHERWISE REDISTRIBUTE REQUIRES A FEE AND/OR THE SPECIFIC PERMISSION OF THE BROWARD CO. OFFICE OF PLANNING.
BROWARD COUNTY MAKES NO CLAIM OR GUARANTEE REGARDING THE ACCURACY OF ANY COPIES.



SCALE: 1" = 300'

DRC

PZ25-1200025

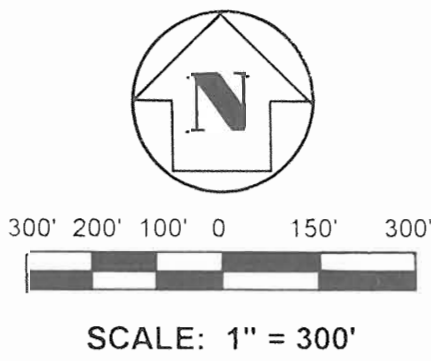
08/06/2025

This is a copy of the original mylar on file with the Engineering Division, Public Works Department, Broward County, Florida.

Permission to copy this photograph is granted, providing that the copies are not made or reduplicated for distribution for direct commercial advantage, and that the entire title block appears on all copies. To copy or otherwise redistribute requires a fee and/or the specific permission of Broward Co.

Broward County makes no claim or guarantee regarding the accuracy of any copies.

T 49 S - R 42 E		
33	34	35
4	THIS SHEET	2
9	10	11



BY: KUCERA SOUTH, INC. - LAKELAND, FLORIDA

BROWARD COUNTY, FL.

DATE OF FLIGHT: JAN. 26, 1995

SECTION	TOWNSHIP	RANGE
3	49	42
SOUTH		



DRC

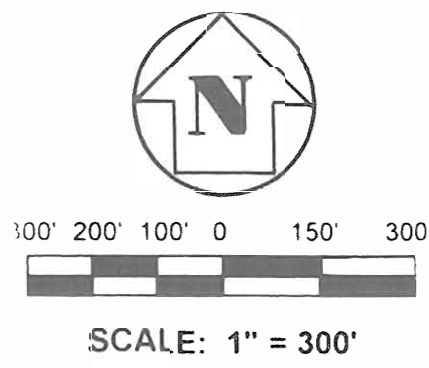
PZ25-12000025

08/06/2025

This is a copy of the original mylar on file with the Engineering Division, Public Works Department, Broward County, Florida.

Permission to copy this photograph is granted, providing that the copies are not made or reduplicated for distribution for direct commercial advantage, and that the entire title block appears on all copies. To copy or otherwise redistribute requires a fee and/or the specific permission of Broward Co.

Broward County makes no claim or guarantee regarding the accuracy of any copies.



BY: 3Di FLORIDA, LLC. HOLLY HILL, FL

BROWARD COUNTY, FL.

DATE OF FLIGHT:

SECTION

TOWNSHIP

RANGE

JAN. 21, 2000

03 49S 42E

SOUTH



DRC

PZ25-12000025

08/06/2025